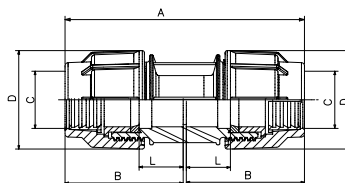


COMPRESSION COUPLER



	Size	Code	g	SP	A	B	C	E	L
1	20mm	202030101010101	72	120	114	56	45	21	25
2	25mm	202030201010101	78	80	126	62	53	27	26
3	32mm	202030301010101	108	50	131	64	65	34	24
4	40mm	202030401010101	224	24	170	84	82	44	25
5	50mm	202030501010101	476	18	191	95	93	54	26
6	63mm	202030601010101	596	8	240	118	117	64	42

Note : SP - Standard Packing Quality, g - Individual fitting weight in gms

Kimplas Compression fittings, PN 16 and are designed to use with all types of Polyethylene Pipes i.e. HDPE, MDPE (grades PE100, PE80, PE63, etc.). Unique design of the fitting facilitates insertion of the pipe into fitting without disassembling the fitting.

The working temperature range of the fittings is - 5° to + 40°C and the fittings are recommended for cold water services only. The fittings are ideally suited for connecting House Service Connections in Drinking Water Distribution piping networks. For exact recommendations on the applications and use, refer Kimplas Technical Specifications Manual.

Standards:

- Pipe compatibility ISO :4427-2, EN:12201-2, IS: 4984, DIN : 8074
- Dimensions, features & functional tests: ISO:3501, ISO:3503, ISO:3459
- Complies with ISO:14236

Common Applications:

- ✓ PE Pipe to PE pipe connection during laying
- ✓ Pipe connections in areas difficult to access
- ✓ Repairing localized damages on pipes Connections
- ✓ Pipe Connections of permanently laid down (immovable) pipes
- ✓ Reinforcements of squeezed or kinked portions of pipe Connections to permanently laid down (immovable) pipes
- ✓ Enables speedy laying of Pipes in emergencies and ideal for semi permanent Water Supply Systems

Installation :

Joint preparation must be done as specified in the installation instructions. Pipe ends must be cut square and burr-free before using with the fittings. Chamfer may be provided on the pipe end to facilitate ease of pipe insertion. To install the fitting, there is no need to open the nut and other components of the fitting. To install the fitting, just loosen the nut by three to four turns, insert the pipe into the fitting until the pipe crosses the rubber seal and stops at the pipe stop. Then tighten the nut by hands only. For fittings of size 40 mm and above a wrench recommended by Kimplas may be used for additional tightening. The nut should be closed tightly, however there is no need for the nut to actually meet the body. Complete Installation Manual may be downloaded.

Advantages :

- The body is made of Polypropylene and designed with modular construction and axial reinforcement
- The nut made of Polypropylene, with its sturdy design holds the pipe-fitting assembly intact with continuous working pressures upto 16 Bars
- The grip ring made up of POM (Poly-acetal) prevents the pipe being pulled out from the fitting
- The PP (Packing Pressure) Bush exerts thrust on the rubber O'-Ring / Gasket, compresses on pipe and fitting body to ensure leak-tightness
- Rubber O'-Ring / Gasket prevent leakage under internal pressure as well as under external pressure as in case of vacuum and/or suction
- Plastic & rubber materials conform to the Standard requirements for use with potable Water for Human consumption
- Higher penetration of Pipe in the fittings enables for proper alignment
- Clearance-Fit for ease of installation and repairs
- Tolerance fit to take care of ovality of coiled pipes
- Permanent Batch Indicator, Size, PN rating and Raw Material Grade marking for ease of traceability
- Compact but sturdy design for ease of installation and trouble free service