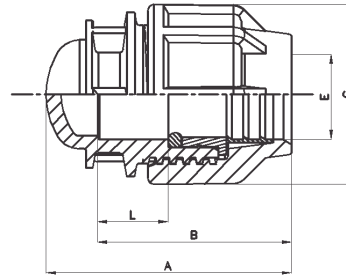


## COMPRESSION END CAP



	Size	Code	g	SP	A	B	C	E	L
1	20mm	202100101010101	38	250	62	51	45	21	20
2	25mm	202100201010101	59	150	74	58	53	27	21
3	32mm	202100301010101	90	100	78	68	65	34	25
4	40mm	202100401010101	196	45	100	85	82	44	29

**Note :** SP - Standard Packing Quality, g - Individual fitting weight in gms

Kimplas Compression fittings PN 16 and are designed to use with all types of Polyethylene Pipes i.e. HDPE, MDPE (grade PE100, PE80, PE63, etc.). Unique design of the fitting facilitates insertion of the pipe into fitting without disassembling the fitting.

Kimplas Compression fittings are ideally suited for connecting House Service Connections (HSC) in Drinking Water Distribution piping networks.

### Standards:

- Pipe compatibility ISO :4427-2, EN:12201-2, IS: 4984, DIN : 8074
- Dimensions, features & functional tests: ISO:3501, ISO:3503, ISO:3459
- Threading: IS:554, ISO:7/1, BS:21, DIN:2999
- Complies with ISO:14236

### Common Applications:

- ✓ For closing end of PE Pipe connection during laying or later.
- ✓ Pipe connections in areas difficult to access in narrow trenches
- ✓ Repairing localized damages on pipes Connections
- ✓ Pipe Connections of permanently laid down (immovable) pipes
- ✓ Enables speedy laying of Pipes in emergencies and ideal for semi permanent Water Supply Systems

### Installation :

Joint preparation must be done as specified in the installation instructions. Pipe ends must be cut square and burr-free before using with the fittings. Chamfer may be provided on the pipe end to facilitate ease of pipe insertion. To install the fitting, there is no need to open the nut and other components of the fitting. To install the fitting, just loosen the nut by three to four turns, insert the pipe into the fitting until the pipe crosses the rubber seal and stops at the pipe stop. Then tighten the nut by hands only. For fittings of size 40 mm and above a wrench recommended by Kimplas may be used for additional tightening. The nut should be closed tightly, however there is no need for the nut to actually meet the body. Complete Installation Manual may be downloaded.

### Advantages :

- The body is made of Polypropylene and designed with modular construction and axial reinforcement
- The nut made of Polypropylene, with its sturdy design holds the pipe-fitting assembly intact with continuous working pressures upto 16 Bars
- The grip ring made up of POM (Poly-acetal) prevents the pipe being pulled out from the fitting
- The PP (Packing Pressure) Bush exerts thrust on the rubber O'-Ring / Gasket, compresses on pipe & fitting body to ensure leak-tightness
- Rubber O'-Ring / Gasket prevent leakage under internal pressure as well as under external pressure as in case of vacuum and/or suction
- Plastic & rubber materials conform to the Standard requirements for use with potable water for human consumption
- Connecting to BSP threaded GI Pipe & fittings & brass/PVC valves etc
- Higher penetration of Pipe in the fittings enables for proper alignment
- Clearance-Fit for ease of installation and repairs
- Tolerance fit to take care of ovality of coiled pipes
- Permanent Batch Indicator, Size, PN rating and Raw Material Grade marking for ease of traceability
- Compact but sturdy design for ease of installation and trouble free service

