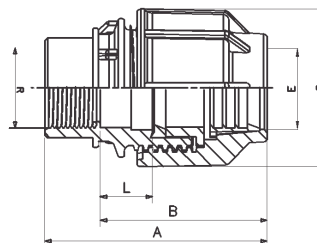


## FEMALE THREADED ADAPTOR (FTA)



	Size	Code	g	SP	A	B	C	E	L
1	20mmx $\frac{1}{2}$ "	202020101010101	42	225	76	56	45	21	25
2	25mmx $\frac{3}{4}$ "	202020201010101	72	140	85	58	53	27	20
3	32mmx1"	202020301010101	104	85	95	65	65	34	26
4	40mmx1 $\frac{1}{4}$ "	202020401010101	268	40	114	84	82	44	26
5	50mmx1 $\frac{1}{2}$ "	202020501010101	270	25	126	103	93	54	28
6	63mmx2"	202020601010101	532	12	162	127	117	64	46

**Note :** SP - Standard Packing Quality, g - Individual fitting weight in gms

Kimplas Compression fittings PN 16 and are designed to use with all types of Polyethylene Pipes i.e. HDPE, MDPE (grade PE100, PE80, PE63, etc.). Unique design of the fitting facilitates insertion of the pipe into fitting without disassembling the fitting.

The working temperature range of the fittings is - 5° to + 40°C and the fittings are recommended for cold water services only. The fittings are ideally suited for connecting House Service Connections in Drinking Water Distribution piping networks. For exact recommendations on the applications and use, refer Kimplas Technical Specifications Manual.

### Standards:

- Pipe compatibility ISO :4427-2, EN:12201-2, IS: 4984, DIN : 8074
- Dimensions, features & functional tests: ISO:3501, ISO:3503, ISO:3459
- Threading: IS:554, ISO:7/1, BS:21, DIN:2999
- Complies with ISO:14236

### Common Applications:

- ✓ For joining PE pipe to threaded metal pipe or fittings during pipe-laying
- ✓ Pipe connections in areas difficult to access in narrow trenches
- ✓ Repairing localized damages on pipes Connections
- ✓ Pipe Connections of permanently laid down (immovable) Pipes
- ✓ Enables speedy laying of Pipes in emergencies and ideal for semi permanent Water Supply Systems

### Installation :

Joint preparation must be done as specified in the installation instructions. Pipe ends must be cut square and burr-free before using with the fittings. Chamfer may be provided on the pipe end to facilitate ease of pipe insertion. To install the fitting, there is no need to open the nut and other components of the fitting. To install the fitting, just loosen the nut by three to four turns, insert the pipe into the fitting until the pipe crosses the rubber seal and stops at the pipe stop. Then tighten the nut by hands only. For fittings of size 40 mm & above a wrench recommended by Kimplas may be used for additional tightening. The nut should be closed tightly, however there is no need for the nut to actually meet the body. Complete Installation Manual may be downloaded.

### Advantages :

- The body is made of Polypropylene and designed with modular construction and axial reinforcement
- The nut made of Polypropylene, with its sturdy design holds the pipe-fitting assembly intact with continuous working pressures upto 16 Bars
- The grip ring made up of POM (Poly-acetal) prevents the pipe being pulled out from the fitting
- The PP (Packing Pressure) Bush exerts thrust on the rubber O'-Ring / Gasket, compresses on pipe & fitting body to ensure leak-tightness
- Rubber O'-Ring / Gasket prevent leakage under internal pressure as well as under external pressure as in case of vacuum and/or suction
- Plastic and rubber materials conform to the Standard requirements for use with potable water for human consumption.
- Connecting to BSP threaded GI Pipe & fittings & brass/PVC valves etc
- Higher penetration of Pipe in the fittings enables for proper alignment
- Clearance-Fit for ease of installation and repairs
- Tolerance fit to take care of ovality of coiled pipes
- Permanent Batch Indicator, Size, PN rating & Raw Material Grade marking for ease of traceability.
- Compact but sturdy design for ease of installation & trouble free service