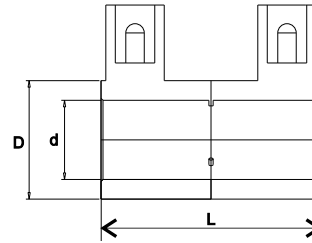


Electrofusion Coupler for Gas / Water - SDR11 (ISO S5)



d	PRODUCT CODE		SP	g	D	L	F-T	C-T
	PE 100 Black 4 mm Pin Terminal	PE 100 Black 4.7mm Pin Terminal						
20	201030101020302	201420101010101	250	44	31	70	22	4
25	201030201020302	201420201010101	175	53	36	70	28	4
32	201030301020302	201420301010101	150	68	44	75	42	4
40	201030401020302	201420401010101	125	67	53	75	52	7
50	201030501020302	201420501010101	60	133	65	90	55	7
55	201031901020302	201421701010101	50	133	69	85	40	7
63	201030601020302	201420601010101	35	211	81	100	70	7
75	201030701020302	201421801010101	35	221	91	100	80	7
90	201030801020302	201420701010101	14	496	113	125	140	15
110	201030901020302	201420801010101	11	799	138	152	160	15
125	201031001020302	201420901010101	7	1150	155	160	200	15

Note : SP = Standard Pack Quantity, g = Weight in Grams, F-T = Fusion Time in Seconds, C-T = Cooling Time in Minutes

Kimplas Electrofusion Couplers, manufactured in PE100 (Black) grade are Standard SDR 11 rated (PN 16). For exact recommendations on compatibility for welding with SDR 9 through SDR 21 or PN 6 through PN 16 Pipes, refer Kimplas Technical Specifications Manual.

Kimplas Electrofusion fittings are suitable for permanently connecting MDPE 80 and PE 100 pipes, both in straight as well as coil form.

Standards:

- PE Pipe Compatibility : IS:14885, ISO:4437, EN:1555-2, EN:12201-2, ISO:4427, IS: 4984, DIN:8074
- Complies with EN 1555- Part 3

Common Applications:

- ✓ Pipe to pipe connection during laying
- ✓ Pipe connections in areas difficult to access, in narrow trenches
- ✓ Repairing localised damages on pipes, connections of transition fittings, pipe stub ends etc
- ✓ Pipe Connections with spigot end fittings
- ✓ Reinforcements of squeezed or kinked portions of permanently laid down (immovable) pipes

Installation :

Joint preparation must be done as specified in the installation instructions. Pipe outside surface must be scraped to remove oxidized layer. Before fusing, pipe ends and inside of the fittings must be cleaned to remove dirt and contamination. Complete Installation Manual may be downloaded.

Advantages :

- Standard Operating Voltage - 40 V
- Same fusion time for various SDR and PN rated pipes
- Higher penetration of pipe in the fittings enables proper alignment
- Optimal fusion and cold zone for a strong and sturdy joint
- Auto Temperature compensation for ambient conditions -5°C to +40°C
- Clearance-Fit for ease of installation and removable centre stop for ease of repairs
- Pop-Up fusion indicators to indicate fusion process performance
- Permanent Batch Indicator, Fusion Time, Cooling Time, Raw Material Grade and SDR marking
- Each fitting individually packed in PE bag to protect against contamination and oxidation
- Each fitting with water-proof bar code to automatically feed fusion data to the Control-box for fusion process