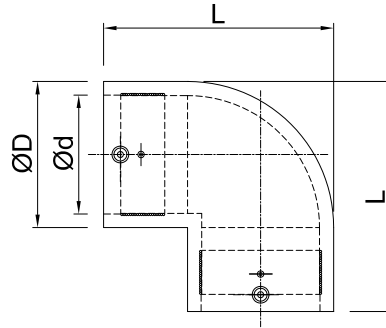


Electrofusion Elbow 90° for Gas / Water - SDR11 (ISO S5)



d	PRODUCT CODE		SP	g	D	d	L	F-T	C-T
	PE 100 Black 4 mm Pin Terminal	PE 100 Black 4.7mm Pin Terminal							
20	201060101020302	20145010101010101	168	35	33	20	70	26	4
25	201060201020302	20145020101010101	120	35	35	25	71	26	4
32	201060301020302	20145030101010101	96	48	44	32	75	45	4
40*	201060401020302	20145110101010101	70	116	53	40	92	52	7
63	201060601020302	20145040101010101	21	290	82	63	125	70	7
90	201060801020302	20145050101010101	8	655	113	90	172	140	15
110	201060901020302	20145080101010101	4	806	137	110	209	160	15
125	201061001020302	20145060101010101	4	1529	155	127	230	200	15

*Under Approval

Note : SP = Standard Pack Quantity, g = Weight in Grams, F-T = Fusion Time in Seconds, C-T = Cooling Time in Minutes

Kimplas Electrofusion Elbows, manufactured in PE100 (Black) grade are Standard SDR 11 rated (PN 16). For exact recommendations on compatibility for welding with SDR 9 through 21 or PN 6 through PN 16, refer Kimplas Technical Specifications Manual.

Kimplas Electrofusion Elbows are suitable for permanently connecting MDPE 80 and PE 100 pipes, both in straight as well as coil form.

Standards:

- PE Pipe Compatibility : IS:14885, ISO:4437, EN:1555-2, EN:12201-2, ISO:4427, IS: 4984, DIN:8074
- Complies with EN 1555- Part 3

Common Applications:

- ✓ Make 90° turn on mains and distribution pipes in a distribution network
- ✓ Turning pipe through 90° in narrow trenches, in areas difficult to access and House Service Connections
- ✓ Pipe Connections with spigot end fittings, pipe stub ends etc

Installation :

Joint preparation must be done as specified in the installation instructions. Pipe outside surface must be scraped to remove oxidised layer. Before fusing, pipe ends and inside of the fittings must be cleaned to remove dirt and contamination. Complete Installation Manual may be downloaded.

Advantages :

- Standard Operating Voltage - 40 V
- Same fusion time for various SDR and PN rated pipes
- Higher penetration of pipe in the fittings enables proper alignment
- Optimal fusion and cold zone for a strong and sturdy joint
- Auto Temperature compensation for ambient conditions -5°C to +40°C
- Clearance-Fit for ease of installation
- Pop-Up fusion indicators to indicate fusion process performance
- Permanent Batch Indicator, Fusion Time, Cooling Time, Raw Material Grade and SDR marking
- Each fitting individually packed in PE bag to protect against contamination and oxidation
- Each fitting with water-proof bar code to automatically feed fusion data to the Control-box for fusion process