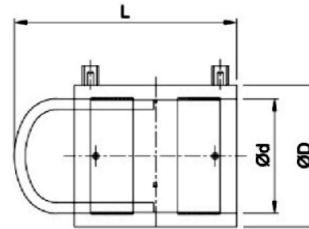


Electrofusion End Cap for Gas / Water - SDR11 (ISO S5)



d	PRODUCT CODE		SP	g	D	d	L	F-T	C-T
	PE 100 Black 4 mm Pin Terminal	PE 100 Black 4.7mm Pin Terminal							
20	201300601010101	201480301010101	160	54	31	20	99	22	4
25	201300701010101	201480401010101	120	67	37	25	100	28	4
32	201300401010101	201480501010101	100	88	45	32	105	42	4
40	201300901010101	201480601010101	50	105	53	40	115	52	7
50	201301001010101	201480701010101	20	218	65	50	138	55	7
55	201301101010101	201480801010101	20	218	69	55	138	40	7
63	201300501010101	201480101010101	24	327	81	63	150	70	7
75	201300801010101	201480901010101	12	397	91	75	168	80	7
90	201300101010101	201480201010101	10	782	113	90	193	140	15
110	201300301010101	201481001010101	6	1254	138	110	217	160	15
125	201300201010101	201481101010101	4	1760	155	125	230	200	15

Note : SP = Standard Pack Quantity, g = Weight in Grams, F-T = Fusion Time in Seconds, C-T = Cooling Time in Minutes

Kimplas Electrofusion End Caps consist of Standard Electrofusion Coupler and a Spigot End Cap. The Coupler as well as the Spigot End Caps are manufactured in PE100 (Black) grade are Standard SDR 11 rated (PN 16). For exact recommendations on compatibility for welding with SDR 9 through SDR 21 or PN 6 through PN 16, refer Kimplas Technical Specifications Manual.

Kimplas Electrofusion fittings are suitable for permanently connecting MDPE 80 and PE 100 pipes, both in straight as well as coil form.

Standards:

- PE Pipe Compatibility : IS:14885, ISO:4437, EN:1555-2, EN:12201-2, ISO:4427, IS: 4984, DIN:8074
- Complies with EN 1555- Part 3

Common Applications:

- ✓ Closing ends of pipe permanently on mains and distribution pipes in a distribution network
- ✓ Closing spigot end of fittings

Installation :

Joint preparation must be done as specified in the installation instructions. Pipe outside surface must be scraped to remove oxidized layer. Before fusing, pipe ends and inside of the fittings must be cleaned to remove dirt and contamination. Complete Installation Manual may be downloaded.

Advantages :

- Standard Operating Voltage - 40 V
- Same fusion time for fusion with various SDR & PN rated pipes
- Higher penetration of pipe in the fittings enables proper alignment
- Optimal fusion and cold zone for a strong and sturdy joint
- Auto Temperature compensation for ambient conditions -5°C to +40°C
- Clearance-Fit for ease of installation and removable centre stop for ease of repairs
- Pop-Up fusion indicators to indicate fusion process performance
- Permanent Batch Indicator, Fusion Time, Cooling Time, Raw Material Grade and SDR marking
- Each fitting individually packed in PE bag to protect against contamination and oxidation
- Each fitting with water-proof bar code to automatically feed fusion data to the Control-box for fusion process