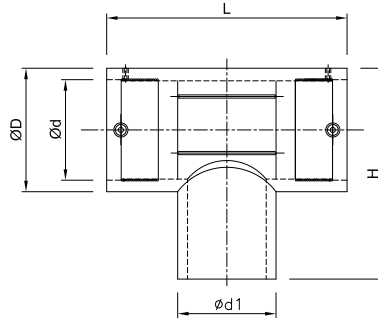


Electrofusion Equal Tee for Gas / Water - SDR11 (ISO S5)



d	PRODUCT CODE		SP	g	D	d	d1	L	H	F-T	C-T
	PE 100 Black 4 mm Pin Terminal	PE 100 Black 4.7mm Pin Terminal									
20	201050101020302	201460101010101	120	69	32	20	20	90	83	22	4
25	201050201020302	201460201010101	90	64	35	25	25	90	86	28	4
32	201050301020302	201460301010101	60	94	45	32	32	101	96	42	4
63	201050601020302	201460401010101	14	379	82	63	63	151	160	70	7
90	201050801020302	201460501010101	4	922	113	90	90	220	218	140	15
110	201050901020302	201460901010101	3	1384	137	110	110	252	253	160	15
125	201051001020302	201460601010101	2	2024	155	125	125	256	268	200	15

Note : SP = Standard Pack Quantity, g = Weight in Grams, F-T = Fusion Time in Seconds, C-T = Cooling Time in Minutes

Kimplas Electrofusion Tees, manufactured in PE100 (Black) grade are Standard SDR 11 rated (PN 16). For exact recommendations on compatibility for welding with SDR 9 through SDR 21 or PN 6 through PN 16 pipes, refer Kimplas Technical specifications manual.

Kimplas Electrofusion fittings are suitable for permanently connecting PE80 and PE100 pipes, both in straight as well as coil form.

Standards:

- PE Pipe Compatibility : IS:14885, ISO:4437, EN:1555-2, EN:12201-2, ISO:4427, IS: 4984, DIN:8074
- Complies with EN 1555- Part 3

Common Applications:

- ✓ Make a branch connection on mains and distribution pipes in a distribution network
- ✓ Taking branch connections in narrow trenches, in areas difficult to access and House Service Connections
- ✓ Pipe Connections with spigot end fittings, pipe stub ends etc

Installation :

Joint preparation must be done as specified in the installation instructions. Pipe outside surface must be scraped to remove oxidized layer. Before fusing, pipe ends and inside of the fittings must be cleaned to remove dirt and contamination. Complete Installation Manual may be downloaded.

Advantages :

- Standard Operating Voltage - 40 V
- Same fusion time for various SDR and PN rated pipes
- Higher penetration of pipe in the fittings enables proper alignment
- Optimal fusion and cold zone for a strong and sturdy joint
- Auto Temperature compensation for ambient conditions -5°C to +40°C
- Clearance-Fit for ease of installation
- Pop-Up fusion indicators to indicate fusion process performance
- Permanent Batch Indicator, Fusion Time, Cooling Time, Raw Material Grade and SDR marking
- Each fitting individually packed in PE bag to protect against contamination and oxidation
- Each fitting with water-proof bar code to automatically feed fusion data to the Control-box for fusion process

