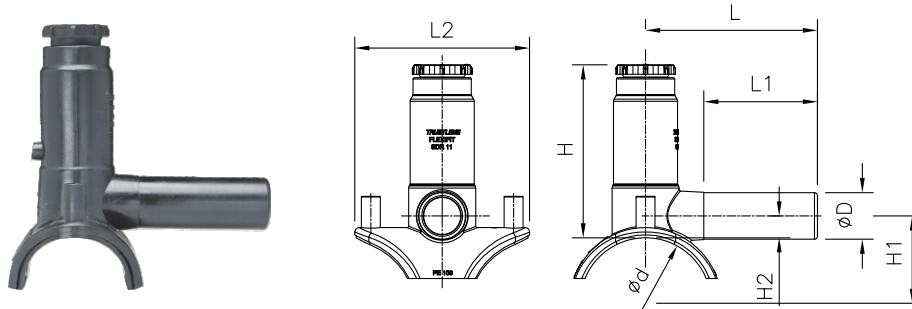


Electrofusion Flexi - Fit Tapping Tee for Gas / Water - SDR11 (ISO S5)



dxd1	PRODUCT CODE		SP	g	L	L ₁	L ₂	H	H ₁	H ₂	F-T	C-T
	PE 100 Black 4 mm Pin Terminal	PE 100 Black 4.7mm Pin Terminal										
63-75X20	201500401020302	201490401020203	24	241	118	76	120	119	47	15	70	4
63-75X32	201500101020302	201490101020203	20	274	118	76	120	119	47	15	70	4
90-140x20	201500501020302	201490501020203	20	233	118	76	120	119	60	15	70	4
90-140x32	201500201020302	201490201020203	20	266	118	76	120	119	60	15	70	4
160-225X20	201500601020302	201490601020203	24	292	130	76	120	136	98	15	80	4
160-225X32	201500301020302	201490301020203	20	315	130	76	120	136	98	15	80	4

Note : SP = Standard Pack Quantity, g = Weight in Grams, F-T = Fusion Time in Seconds, C-T = Cooling Time in Minutes
One product covers a range of main pipe sizes providing advantage of low inventory cost to the end user.

Kimplas Electrofusion Flexi-Fit Tapping Tees, manufactured in PE100 (Black) grade are Standard SDR 11 rated (PN 16). For exact recommendations on compatibility for welding with SDR 9 through SDR 21 or PN 6 through PN 16 pipes, refer Kimplas Technical Specifications Manual.

Kimplas Electrofusion TTs are suitable for tapping from PE 100 pipes, both in straight as well as coil form.

Standards:

- PE Pipe Compatibility : IS:14885, ISO:4437, EN:1555-2, EN:12201-2, ISO:4427, IS: 4984, DIN:8074
- Complies with EN 1555- Part 3

Common Applications:

- ✓ Tapping from Charged or Uncharged network for House Service Connections
- ✓ Branch connections
- ✓ Tapping connections in areas difficult to access in narrow trenches

Installation :

Joint preparation must be done as specified in the installation instructions. Pipe outside surface must be scraped to remove oxidized layer. Before fusing, scraped pipe-surface and matt area of the fittings must be cleaned to remove dirt and contamination. Complete Installation Manual may be downloaded.

Advantages :

- Standard Operating Voltage - 40 V
- Same fusion time for various SDR and PN rated pipes
- Auto temperature compensation for ambient conditions of -5 ° C to +40°C
- Top load takes care of saddle base radius matching (alignment) with pipe OD even in case of ovality of coiled pipes
- Optimal fusion and cold zone for a sturdy joint
- Pop-Up fusion indicators to indicate fusion process performance
- Integral Brass cutter. Once TT fused, cutter cannot be taken out
- Cutter leak tight in upper most position
- Cutter retains the pipe coupon positively, never allows it slip into pipe
- Permanent Batch Indicator, Fusion Time, Cooling Time, Raw Material Grade and SDR marking
- Each fitting individually packed to protect against contamination and oxidation
- Each fitting with water-proof bar code to automatically feed fusion data to the Control-box for fusion process

