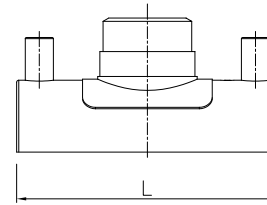
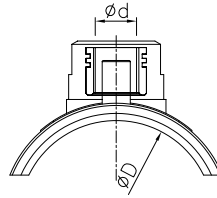


Electrofusion Flexifit Branch Tapping Saddles Female BSP Threaded with SS Insert for Water - SDR11 (ISO S5)



Dxd	PRODUCT CODE	SP	g	D	d	L	F-T	C-T
	PE 100 Black 4 mm Pin Terminal							
63-75X1/2"	201471001020202	60	170	63	1/2"	120	70	4
63-75X3/4"	201471101020202	60	182	63	3/4"	120	70	4
63-75X1"	201471201020202	60	230	63	1"	120	70	4
90-140X1/2"	201470101020202	60	123	90	1/2"	120	80	4
90-140X3/4"	201470201020202	60	182	90	3/4"	120	80	4
90-140X1"	201470301020202	60	230	90	1"	120	80	4
90-140X1 1/4"	*	16	219	90	1 1/4"	120	80	4
90-140X1 1/2"	*	16	201	90	1 1/2"	120	80	4
90-140X2"	*	16	226	90	2"	120	80	4
160-225X1/2"	201470401020202	36	241	160	1/2"	120	70	4
160-225X3/4"	201470501020202	36	256	160	3/4"	120	70	4

Dxd	PRODUCT CODE	SP	g	D	d	L	F-T	C-T
	PE 100 Black 4 mm Pin Terminal							
160-225X1"	201470601020202	27	358	160	1"	120	80	4
160-225X1 1/4"	*	16	273	160	1 1/4"	120	70	4
160-225X1 1/2"	*	16	258	160	1 1/2"	120	70	4
160-225X2"	*	16	280	160	2"	120	80	4
250-315X1/2"	201470701020202	36	304	250	1/2"	120	75	4
250-315X3/4"	201470801020202	36	289	250	3/4"	120	75	4
250-315X1"	201470901020202	27	289	250	1"	120	75	4
250-315X1 1/4"	*	16	296	250	1 1/4"	120	75	4
250-315X1 1/2"	*	16	285	250	1 1/2"	120	75	4
250-315X2"	*	16	287	250	2"	120	80	4

*Under Approval

Used for tapping from PE water mains for service connections with or without flow regulating ferrule.

Note : SP = Standard Pack Quantity, g = Weight in Grams, F-T = Fusion Time in Seconds, C-T = Cooling Time in Minutes

Kimplas Electrofusion Flexi-Fit Branch Tapping Saddles, manufactured in PE 100 (Black) grade with threaded metal insert outlets are rated PN 16. For exact recommendation on compatibility for welding with PN 6 through PN 16 Pipes, refer Kimplas Technical Specifications Manual.

Kimplas Electrofusion fittings are suitable for permanently connecting drinking water distribution MDPE 80 and PE 100 pipes, both in straight form as well as coil form.

Standards:

- PE Pipe Compatibility : ISO:4427 -2, IS : 4984, EN: 12201-2
- Complies with ISO : 4427 - Part 3 & EN : 12201 - Part 3

Common Applications:

- ✓ Threaded tapping connections of size 1/2", 3/4", and 1" for House Service Connections.
- ✓ Fixing of Brass Ferrules on PE pipes
- ✓ Tapping connections in areas difficult to access, in narrow trenches etc
- ✓ Connections with threaded compression fittings used with PE pipes

Installation :

Joint preparation must be done as specified in the installation instructions. Pipe outside surface must be scraped to remove oxidized layer. Before fusing, scraped pipe-surface and matt area of the fittings must be cleaned to remove dirt and contamination. Complete Installation Manual may be downloaded.

Advantages :

- Standard Operating Voltage - 40 V.
- Fusion can be done with ambient conditions -5°C to + 40°C, auto Temperature compensation
- Same Fusion time for various SDR and PN rated pipes.
- Top load takes care of TT base radius matching (alignment) with pipe OD even in case of ovality of coiled pipes
- Optimal fusion and cold zone for a sturdy joint.
- Pop-Up fusion indicators to indicate fusion process performance.
- Reusable cutter to cut hole in pipes after fusion welding of the Saddle
- Cutter retains the pipe coupon positively, never allows to slip into pipe
- Permanent Batch Indicator, Fusion Time, Cooling Time, Raw Material Grade and PN marking
- Each fitting individually packed to protect against contamination and oxidation
- Each fitting with water-proof bar code to automatically feed fusion data to the Control-box for fusion process

GW-Rev02/Feb12