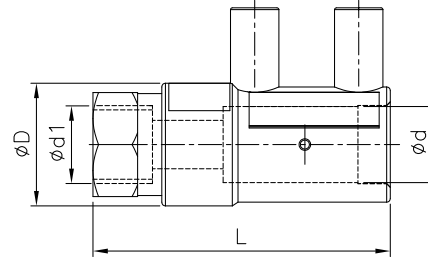


## PE - Metal Transition Coupler with Stainless Steel Threaded Insert for Gas / Water SDR 11 (ISO S5)



dxd1	PRODUCT CODE		SP	g	D	d	L	F-T	C-T	Threading
	PE 100 Black 4 mm Pin Terminal	PE 100 Black 4.7mm Pin Terminal								
20x1/2"	201550301020201	201550301020301	100	131	33	20	80	19	4	NPT
20x1/2"	201550101020201	201550101020301	100	131	33	20	80	19	4	BSP

Note : SP = Standard Pack Quantity, g = Weight in Grams, F-T = Fusion Time in Seconds, C-T = Cooling Time in Minutes

Kimplas Electrofusion Transition fittings consist of Standard Electrofusion Coupler at one end, with an integrally moulded threaded-SS insert at the other end. The Transition Couplers, manufactured in PE100 (Black) grade are Standard SDR 11 rated (PN 16). For exact recommendations on compatibility for welding with SDR 9 through SDR 21 or PN 6 through PN 16 pipes, refer Kimplas Technical Specifications Manual.

Kimplas Electrofusion fittings are suitable for permanently connecting MDPE 80 and PE 100 pipes, both in straight as well as coil form.

### Standards:

- PE Pipe Compatibility : IS:14885, ISO:4437, EN:1555-2, EN: 12201-2, ISO:4427, IS: 4984, DIN:8074
- Complies with EN 1555- Part 3

### Common Applications:

- ✓ Transition of House Service Connection (HSC) from Polyethylene to metal on mains and distribution pipes in a distribution network.

### Installation :

Joint preparation must be done as specified in the installation instructions. Pipe outside surface must be scraped to remove oxidized layer. Before fusing, pipe ends and inside of the fittings must be cleaned to remove dirt and contamination. Complete Installation Manual may downloaded.

### Advantages :

- Standard Operating Voltage - 40 V
- Same fusion time for fusion with various SDR PN rated pipes
- Threading available in both BSP & NPT as per customer request
- Non corrosive Metal insert in SS 304
- Higher penetration of pipe in the fittings enables proper alignment
- Optimal fusion and cold zone for a strong and sturdy joint
- Auto Temperature compensation for ambient conditions -5°C to + 40°C
- Clearance-Fit for ease of installation
- Easy fitment with metal riser pipes, saves additional coupler cost
- Pop-Up fusion indicators to indicate fusion process performance
- Permanent Batch Indicator, Fusion Time, Cooling Time, Raw Material Grade and SDR marking
- Each fitting individually packed in PE bag to protect against contamination and oxidation
- Each fitting with water-proof bar code to automatically feed fusion data to the Control-box for fusion process

