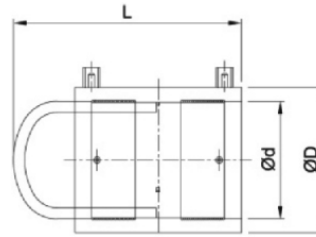
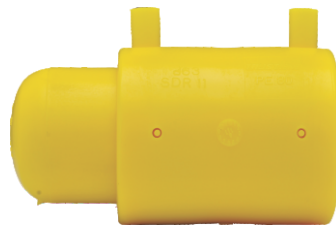


Electrofusion End Cap for Gas - SDR11 (ISO S5)



d	PRODUCT CODE PE80 Yellow 4.7mm Pin Terminal	SP	g	D	d	L	F-T	C-T
20	201300601020202	160	54	31	20	99	22	4
25	201300701020202	120	67	37	25	100	28	4
32	201300401020202	100	88	45	32	105	42	4
40*	201300901020202	50	105	53	40	115	52	7
50*	201301001020202	20	218	65	50	138	55	7
55*	201301101020202	20	218	69	55	138	40	7
63	201300501020202	24	327	81	63	150	70	7
75*	201300801020202	12	397	91	75	168	80	7
90	201300101020202	10	782	113	90	193	140	15
110	201300301020202	6	1254	138	110	217	160	15
125	201300201020202	4	1760	155	125	230	200	15

*Under Approval

Note : SP = Standard Pack Quantity, g = Weight in Grams, F-T = Fusion Time in Seconds, C-T = Cooling Time in Minutes

Kimplas Electrofusion End Caps consist of Standard Electrofusion Coupler and a spigot End Cap. The coupler as well as the Spigot End Caps, manufactured in PE80 (Yellow) grade are Standard SDR 11 rated. For exact recommendations on compatibility for welding with SDR 9 through SDR 21, refer Kimplas Technical Specifications Manual.

Kimplas Electrofusion End Caps are suitable for permanently connecting PE80 pipes, both in straight as well as coil form.

Standards:

- PE Pipe Compatibility : IS:14885, ISO:4437, EN:1555-1, GIS PL 2 / 2
- Complies with GIS PL 2 / 4

Common Applications:

- ✓ Closing ends of pipe permanently on mains and distribution pipes in a distribution network
- ✓ Closing spigot end of fittings

Installation :

Joint preparation must be done as specified in the installation instructions. Pipe outside surface must be scraped to remove oxidized layer. Before fusing, pipe ends and inside of the fittings must be cleaned to remove dirt and contamination. Complete Installation Manual may be downloaded.

Advantages :

- Standard Operating Voltage - 40 V
- Same fusion time for fusion with various SDR rated pipes
- Higher penetration of pipe in the fittings enables proper alignment
- Optimal fusion and cold zone for a strong and sturdy joint
- Auto Temperature compensation for ambient conditions -5°C to +40°C
- Clearance-Fit for ease of installation
- Pop-Up fusion indicators to indicate fusion process performance
- Permanent Batch Indicator, Fusion Time, Cooling Time, Raw Material Grade and SDR marking
- Each fitting individually packed in PE bag to protect against contamination and oxidation
- Each fitting with water-proof bar code to automatically feed fusion data to the Control-box for fusion process