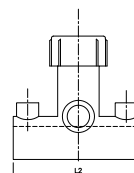
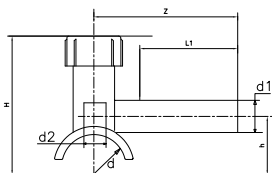


Electrofusion Tapping Tee for Gas - SDR11 (ISO S5)



dxd1	PRODUCT CODE	SP	g	z	d ₂	h	H	L	L ₁	F-T	C-T
	PE80 Yellow 4.7mm Pin Terminal										
32X20*	201010101010101	40	97	90	12	29	83	101	65	30	4
50X25*	201010301010101	25	153	100	16	38	104	113	65	30	4
63X32	201010501010101	16	237	130	25	49	137	120	76	70	4
90X32	201010901010101	12	277	130	25	62	151	120	76	70	4
110X32	201011101010101	12	257	130	25	79	168	120	76	70	4
125X32	201011301010101	12	281	130	25	87	175	120	76	80	4
160X32	201011701010101	12	289	130	25	106	194	120	76	80	4
180X32	201011901010101	12	278	130	25	117	206	120	76	85	4
200X32*	201012101010101	12	278	130	25	117	206	120	76	85	4
250X20*	201014701010101	12	335	130	25	117	206	120	76	85	4
250X32*	201012501010101	12	335	130	25	117	206	120	76	85	4

*Under Approval

Note : SP = Standard Pack Quantity, g = Weight in Grams, F-T = Fusion Time in Seconds, C-T = Cooling Time in Minutes

Kimplas Electrofusion Tapping Tees, manufactured in PE80 (Yellow) grade are Standard SDR 11 rated. For exact recommendations on compatibility for welding with SDR 9 through SDR 21, refer Kimplas Technical Specification Manual.

Kimplas Electrofusion Tapping Tees are suitable for tapping House Service Connections with PE80 pipes.

Standards:

- PE Pipe Compatibility : IS:14885, ISO:4437, EN:1555-1, GIS PL 2 / 2
- Complies with GIS PL 2 / 4

Common Applications:

- ✓ Tapping from Charged or Uncharged networks for House Service Connection
- ✓ Branch connections
- ✓ Tapping connections in areas difficult to access in narrow trenches

Installation :

Joint preparation must be done as specified in the installation instructions. Pipe outside surface must be scraped to remove oxidized layer. Before fusing, scraped pipe- surface and matt area of the fittings must be cleaned to remove dirt and contamination. Complete Installation Manual may be downloaded.

Advantages:

- Standard Operating Voltage - 40 V
- Same Fusion time for various SDR rated pipes
- Auto Temperature compensation for ambient conditions -5°C to +40°C
- Top load takes care of TT base radius matching (alignment) with pipe OD even in case of ovality of coiled pipes
- Optimal fusion and cold zone for a sturdy joint
- Pop-Up fusion indicators to indicate fusion process performance
- Integral Brass cutter. Once TT fused, Cutter cannot be taken out
- Cutter leak-tight in uppermost position
- Cutter retains the pipe coupon positively, never allows to slip into pipe
- Long spigot outlets to perform second fusion when required
- Permanent Batch Indicator, Fusion Time, Cooling Time, Raw Material Grade and SDR marking
- Each fitting individually packed to protect against contamination and oxidation
- Each fitting with water-proof bar code to automatically feed fusion data to the Control-box for fusion process