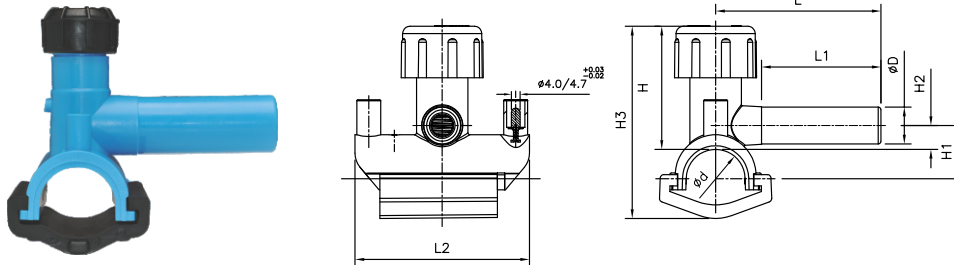


Electrofusion Wrap Around Tapping Tee for Water - SDR11 (ISO S5)



dx d1	PRODUCT CODE	SP	g	D	H	H ₁	H ₂	H ₃	L	L ₁	L ₂	F-T	C-T
	PE80 Blue 4mm Pin Terminal												
32x20	201520101010202	40	157	20	67	29	13	105	90	65	95	30	4
40x32	201520401010202	30	270	32	85	40	20	133	110	78	106	30	4
63x32*	201521001010202	22	325	32	124	51	22	190	118	78	120	70	4

*Under Approval

Note : SP = Standard Pack Quantity, g = Weight in Grams, F-T = Fusion Time in Seconds, C-T = Cooling Time in Minutes

Kimplas Electrofusion Wrap Around Tapping Tees, manufactured in PE80 (Blue) grade are Standard SDR 11 rated (PN 12.5). For exact recommendations on compatibility for welding with SDR 9 through SDR 21 or PN 6 through PN 16 pipes, refer Kimplas Technical Specifications Manual. Kimplas Electrofusion Wrap Around Tapping Tees are suitable for Tapping from MDPE 80 pipes, both in straight as well as coil form.

Standards:

- PE Pipe Compatibility : ISO:4427 -Part 2, EN:12201- Part 2, IS:4984, DIN: 8074
- Complies with ISO : 4427 - Part 3 & EN : 12201 - Part 3

Common Applications:

- ✓ Tapping from charged or uncharged network for House Service Connections
- ✓ Branch connections
- ✓ Tapping connections in areas difficult to access in narrow trenches

Installation:

Joint preparation must be done as specified in the installation instructions. Pipe outside surface must be scraped to remove oxidized layer. Before fusing, scraped pipe-surface and matt area of the fittings must be cleaned to remove dirt and contamination. Fix the TT body and insert the bottom wrap. Where required use mallet to hammer the wrap. Complete Installation Manual may be downloaded.

Advantages :

- Standard Operating Voltage - 40 V
- Same fusion time for various PN rated pipes
- Auto Temperature compensation for ambient conditions -5°C to +40°C
- No top load required, bottom wrap holds TT in position during fusion. Takes care of TT base radius matching (alignment) with pipe OD even in case of ovality of coiled pipes
- Optimal fusion and cold zone for a sturdy joint
- Pop-Up fusion indicators to indicate fusion process performance
- Integral Brass cutter. Once TT fused, Cutter cannot be taken out
- Cutter leak-tight in uppermost position
- Cutter retains the pipe coupon positively, never allows to slip into pipe
- Long spigot outlets to perform second fusion when required
- Permanent Batch Indicator, Fusion Time, Cooling Time, Raw Material Grade and SDR marking
- Each fitting individually packed to protect against contamination and oxidation
- Each fitting with water-proof bar code to automatically feed fusion data to the Control-box for fusion process