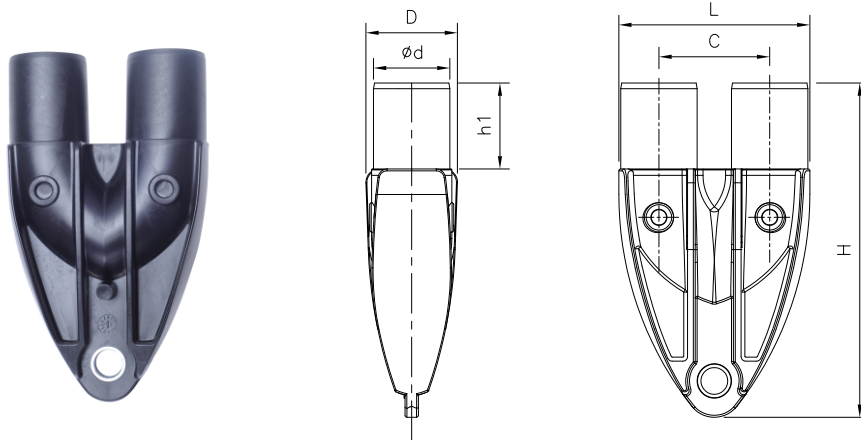


## Kimplas Geothermal U Bend



d	ITEM Code	SP	g	L	H	h <sub>1</sub>	C	D
32	216010301010100	65	120	83	153	45	48	40
40	216010401010100	30	185	100	175	45	58	44

**Note :** SP - Standard Packing Quality, g - Individual fitting weight in gms

Kimplas Geothermal fittings are specially made available to harness geothermal energy for heating purpose.

Kimplas Geothermal U bend is designed to use with PE pipes and electrofusion fittings. The U bend is ideally suited to use a probe for twin pipes used in geothermal bores.

The U bend is made in PE 100 Black material and rated Standard SDR 11. It is available in two popular sizes 32mm and 40 mm. At the downstream end of the bend an eyelet with metal ring is provided for hanging dead load.

### Common Applications:

- ✓ Geothermal probe for twin pipes used in geothermal bores.
- ✓ Connections to PE pipes with electrofusion fittings.

### Installation :

Joint preparation must be done as specified in the installation instructions. Complete Installation Instruction Manual may be obtained from Kimplas.

### Advantages :

- Body made up of PE100 with its sturdy design, holds the pipe and dead load applied.
- Longer spigot length for proper alignment and electrofusion welding.
- Provision to attach dead load to counter buoyancy (avoid floating) when submerged in water in geothermal bore well.
- Clearance-Fit for ease of installation and repairs.
- Tolerance fit to take care of ovality of coiled pipes.
- Permanent Batch Indicator, Size, PN rating and Raw Material Grade marking for ease of traceability.
- Compact but sturdy design for ease of installation and trouble free service.