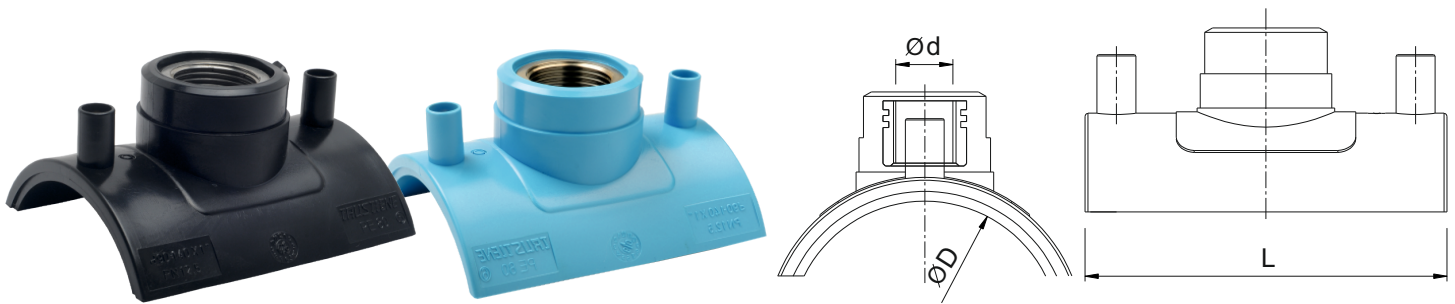


ELECTROFUSION BRANCH SADDLES

For Water - SDR11 (ISO S5)



Kimplas Electrofusion Flexi-Fit Branch Tapping Saddles are manufactured in PE 80 (Black) material with threaded metal insert outlets and are of SDR 11 rating (PN 12.5). For exact recommendations on compatibility, for welding with SDR 9 through SDR 21 or PN 6 through PN 16 pipe, refer Kimplas Technical Specifications Manual. Kimplas Electrofusion fittings are suitable for permanently connecting drinking water distribution MDPE 80 and PE 100 pipes, both in straight form as well as in coil form.

SPECIFICATION TABLE

Dxd	Product Code	SP	Weight (gm)	D (mm)	d (mm)	L (mm)	FT	CT
50x1/2"	BS50X050BKB	86	140	50	1/2"	120	30	4
63-75x1/2"	FFBS63T75X050BKD8	60	233	63	1/2"	120	70	4
63-75x3/4"	FFBS63T75X075BKD8	60	275	63	3/4"	120	70	4
63-75x1"	FFBS63T75X100BLD8	50	275	63	1"	120	70	4
90-140x1/2"	FFBS90T140X050BKD8	60	181	90	1/2"	120	80	4
90-140x3/4"	FFBS90T140X75BKD8	60	183	90	3/4"	120	80	4
90-140x1"	FFBS90T140X100BKD8	60	231	90	1"	120	80	4
160-225x1/2"	BS160T225X050BKD8	36	299	160	1/2"	120	70	4
160-225x3/4"	BS160T225X075BKD	36	301	160	3/4"	120	70	4
160-225x1"	BS160T225X100BK	27	359	160	1"	120	80	4
250-315x1/2"	FFBS250T315X50BKD8	36	303	250	1/2"	120	75	4
250-315x3/4"	FFBS250T315X075BKD	36	305	250	3/4"	120	75	4
250-315x1"	FFBS250T315X100BKD	36	359	250	1"	120	75	4

SP=Standard Pack Quantity, FT=Fusion Time in Seconds, CT=Cooling Time in Minutes, SP and Weight are given for reference only

Note: Every effort has been made to ensure the information in this brochure is correct at the date of issue. Kimplas operates a policy of continual product improvement and range extension, hence reserves the right to modify product specifications, without prior information, in line with market requirements.

STANDARDS

- PE Pipe Compatibility : ISO:4427 -2, IS : 4984, EN: 12201-2.
- Complies with EN12201- Part 3 for Water. AS/NZS 4129 for Water

COMMON APPLICATIONS

- Threaded tapping connections of size 1/2", 3/4", and 1" for House Service Connections.
- Fixing of Brass Ferrules or Flow Control Valves on PE pipes.
- Tapping connections in areas difficult to access, in narrow trenches etc.
- Connections with threaded compression fittings used with PE pipes.

INSTALLATION

Joint preparation must be done as specified in the installation instructions. Pipe outside surface must be scraped to remove oxidized layer. Before fusing, scraped pipe-surface and matt area of the fittings must be cleaned to remove dirt and contamination. Complete Installation Manual may be downloaded.

ADVANTAGES

- Standard Operating Voltage -40 V.
- Fusion can be done with ambient conditions -5°C to + 40°C, Auto Temperature compensation.
- Same Fusion time for various SDR and PN rated pipes.
- Top load takes care of TT base radius matching (alignment) with pipe OD even in case of ovality of coiled pipes.
- Optimal fusion and cold zone for a sturdy joint.
- Pop-Up fusion indicators to indicate fusion process performance.
- Permanent Batch Indicator, Fusion Time, Cooling Time, Raw Material Type and PN marking.
- Each fitting individually packed to protect against contamination and oxidation.
- Each fitting with water-proof bar code to automatically feed fusion data to the Control-box for fusion process.

Contact Us

Kimplas Piping Systems Private Limited - A member of NORMA Group -

B-20, MIDC , Ambad, Nashik- 422010 | India | www.kimplaspiping.net

Tel : +91 253 6622701/2 | Fax: +91 253 6604710 | Email: sales.kimplas@normagroup.com

