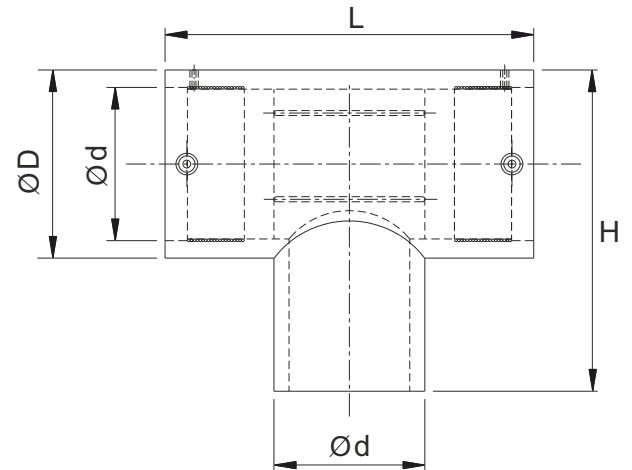


ELECTROFUSION EQUAL TEE

For Gas/Water-SDR 11 (ISO S5)



Kimplas Electrofusion Equal Tees are manufactured in PE 80 (Yellow) & PE 100 (Black) material and are of SDR 11 rating. For exact recommendations on compatibility, for welding with SDR 9 through SDR 21 or PN 6 through PN 16 pipe, refer Kimplas Technical Specifications Manual. Kimplas Electrofusion fittings are suitable for permanently connecting to PE 80 and PE 100 pipes, both in straight as well as in coil form.

SPECIFICATION TABLE

d	Product Code	SP	Weight (gm)	D (mm)	H (mm)	L (mm)	FT	CT
20	ET20BKB	120	69	32	83	90	22	4
25	ET25BKB	90	64	35	86	90	28	4
32	ET32BKB	60	94	45	96	101	42	4
40	ET40BKB	45	140	53	116	115	52	7
63	ET63BKB	14	379	82	160	151	70	7
75	ET75BKB	10	530	94	185	165	80	7
90	ET90BKB	4	922	113	218	220	140	7
110	ET110BKB	3	1384	137	253	252	160	15
125	ET125BKB	6	2024	155	267	256	200	15

BKB - PE 100 Black - 4mm Pin

BK8A - PE 80 Black - 4.7mm Pin

YEA - PE 80 Yellow - 4.7mm Pin

BKA - PE 100 Black - 4.7mm Pin

BK8B - PE 80 Black - 4mm Pin

SP=Standard Pack Quantity, FT=Fusion Time in Seconds, CT=Cooling Time in Minutes, SP and Weight are given for reference only

Note: Every effort has been made to ensure the information in this brochure is correct at the date of issue. Kimplas operates a policy of continual product improvement and range extension, hence reserves the right to modify product specifications, without prior information, in line with market requirements.

STANDARDS

- PE Pipe Compatibility : IS:14885,ISO 4437-Part 2, EN:1555-2, EN: 12201-2, ISO:4427, IS: 4984, DIN:8074. for Gas / Water - SDR11 (ISO S5)
- Complies with EN1555- Part 3 for Gas, EN12201- Part 3 for Water. AS/NZS 4129 for Gas & Water GIS-PL2-Part 4 for Gas

COMMON APPLICATIONS

- Make a branch connection on mains and distribution pipes in a distribution network.
- Taking branch connections in narrow trenches, in areas difficult to access and House Service Connections.
- Pipe Connections with spigot end fittings, pipe stub ends etc.

INSTALLATION

Joint preparation must be done as specified in the installation instructions. Pipe outside surface must be scraped to remove oxidized layer. Before fusing, pipe ends and inside of the fittings must be cleaned to remove dirt and contamination. Complete Installation Manual may be downloaded.

ADVANTAGES

- Standard Operating Voltage - 40 V.
- Same fusion time for various SDR and PN rated pipes.
- Higher penetration of pipe in the fittings enables proper alignment.
- Optimal fusion and cold zone for a strong and sturdy joint.
- Auto Temperature compensation for ambient conditions -5°C to + 40°C.
- Clearance-Fit for ease of installation.
- Pop-Up fusion indicators to indicate fusion process performance.
- Permanent Batch Indicator, Fusion Time, Cooling Time, Raw Material Type and SDR marking.
- Each fitting individually packed in PE bag to protect against contamination and oxidation.
- Each fitting with water-proof bar code to automatically feed fusion data to the Control-box for fusion process.

Contact Us

Kimplas Piping Systems Private Limited - A member of NORMA Group -

B-20, MIDC , Ambad, Nashik- 422010 | India | www.kimplaspiping.net

Tel : +91 253 6622701/2 | Fax: +91 253 6604710 | Email: sales.kimplas@normagroup.com

