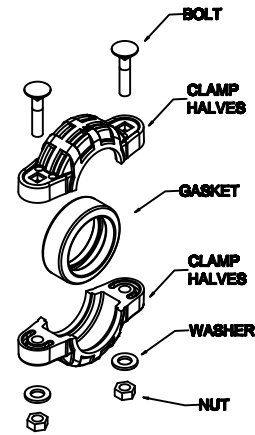
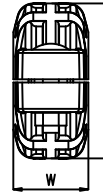
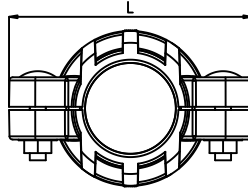


# Quick Pipe Coupling



Nominal Size	Product Code	PN Rating	L	H	W	Compatible Nut bolt size
						Dia. x length, mm
2"	QPC200C	16	152	96	47	M10 x 50
2.5"	QPC250C	16	178	108	47	M12 x 60
3"	QPC300C	16	187	126	47	M12 x 70

## Features:

1. Non corrosive plastic body with Ribbed Reinforcement for a sturdy connection.
2. Unique Quick Coupling design of Grooved Flange & Pressure Activated Gasket.
3. Requires only two nut-bolts as against four used in conventional flanges.
4. Jointing is very fast and automatically takes care of misalignment of pipes.
5. Suitable to connect with QPC Type Manifolds and Adaptors i.e. MTA, FTA and Elbow to quickly adapt to threaded or flanged filter and throttle valve connection.
6. Can be adapted to GI as well as PVC / PE pipes
7. Full-Bore for Excellent Flow-Characteristics and minimal pressure drop.

## QPC INSTALLATION :

Push Gasket on QPC end



Insert QPC end of manifold in gasket



Attach clamp Halve From Bottom Side



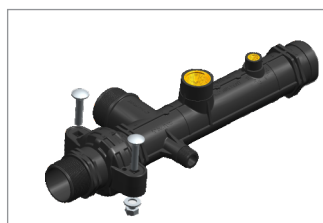
Attach Clamp Halve From Top Side



Slightly Press Clamp Halves



Insert Bolts



Hand Tighten Nuts on Bolts



Tighten Nut bolts with spanner. Joint Complete

