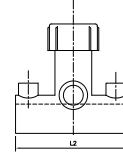
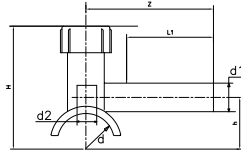


## Electrofusion Tapping Tee for Gas / Water - SDR11 (ISO S5)



dxd1	PRODUCT CODE		SP	g	z	d <sub>2</sub>	h	H	L	L'	F-T	C-T
	PE 100 Black 4 mm Pin Terminal	PE 100 Black 4.7mm Pin Terminal										
32X20	201010101020302	201440101010101	40	97	90	12	29	83	101	65	30	4
50X25	201010301020302	201440201010101	25	153	100	16	38	104	113	65	30	4
63X32	201010501020302	201440301010101	16	237	130	25	49	137	120	76	70	4
90X32	201010901020302	201440401010101	12	277	130	25	62	151	120	76	70	4
110X32	201011101020302	201440501010101	12	257	130	25	79	168	120	76	70	4
125X32	201011301020302	201440901010101	12	281	130	25	87	175	120	76	80	4
160X32	201011701020302	201440601010101	12	289	130	25	106	194	120	76	80	4
180X32	201011901020302	201440701010101	12	278	130	25	117	206	120	76	85	4
200X32	201012101020302	201440801010101	12	278	130	25	117	206	120	76	85	4
250X20*	201014701020302	201441801010101	12	335	130	25	117	206	120	76	85	4
250X32*	201012501020302	201441901010101	12	335	130	25	117	206	120	76	85	4

\*Under Approval

Note : SP = Standard Pack Quantity, g = Weight in Grams, F-T = Fusion Time in Seconds, C-T = Cooling Time in Minutes

Kimplas Electrofusion Tapping Tees, manufactured in PE100 (Black) grade are SDR 11 rated (PN 16). For exact recommendations on compatibility for welding with SDR 9 through SDR 21 or PN 6 through PN 16 pipes, refer Kimplas Technical Specifications Manual.

Kimplas Electrofusion Tapping Tees are suitable for Tapping House Service Connections on MDPE 80 and PE 100 pipes, both in straight as well as coil form.

### Standards:

- PE Pipe Compatibility : IS:14885, ISO:4437, EN:1555-2, EN:12201-2, ISO:4427, IS:4984, DIN:8074
- Complies with EN 1555- Part 3

### Common Applications:

- ✓ Tapping from charged or uncharged network for House Service Connections
- ✓ Branch connections
- ✓ Tapping connections in areas difficult to access in narrow trenches

### Installation :

Joint preparation must be done as specified in the installation instructions. Pipe outside surface must be scraped to remove oxidized layer. Before fusing, scraped pipe- surface and matt area of the fittings must be cleaned to remove dirt and contamination. Complete Installation Manual may be downloaded.

### Advantages :

- Standard Operating Voltage - 40 V
- Same fusion time for various SDR and PN rated pipes.
- Auto Temperature compensation for ambient conditions -5°C to +40°C
- Top load takes care of TT base radius matching (alignment) with pipe OD even in case of ovality of coiled pipes
- Optimal fusion and cold zone for a sturdy joint.
- Pop-Up fusion indicators to indicate fusion process performance
- Integral Brass cutter. Once TT fused, Cutter cannot be taken out
- Cutter leak-tight in uppermost position
- Cutter retains the pipe coupon positively, never allows to slip into pipe
- Long spigot outlets to perform second fusion when required
- Permanent Batch Indicator, Fusion Time, Cooling Time, Raw Material Grade and SDR marking
- Each fitting individually packed to protect against contamination and oxidation
- Each fitting with water-proof bar code to automatically feed fusion data to the Control-box for fusion process

