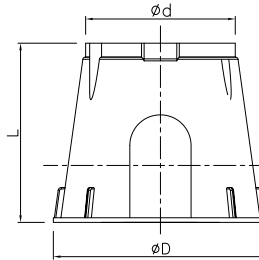


METER / VALVE BOX



| | Size | Code | g | øD | ød | L |
|---|-----------------------------|-----------------|-----|-----|-----|-----|
| 1 | Trustlene Meter Box Dia 10" | 710010101010101 | 892 | 300 | 215 | 255 |

Note: Protection chamber for domestic water meters Valves in size range ½" to 2" chamber to be cement grouted at the base.

Kimplas Threaded Equal Tees are manufactured in PP (Poly-Propylene) are Standard PN 10 rated. They are used on threaded pipes and fittings while taking for branch connections. They are most suitable to connect threaded valves and threaded compression fittings on PE Pipes for drip and sprinkler irrigation piping.

Meter Box/Valve Box - 10" R

Kimplas Meter Box/Valve box is always recommended to encompass & protect Water meters/valves installed on Drinking Water Supply pipes.

Kimplas Meter Box/Valve box consists of main body and closing lid, both in round shape. The body has inlet and outlet windows through which the pipe passes through. The lid can be rotated to fix in place or remove. The lid has a provision to screw in permanently, in place.

The material of construction of the lid and body of the valve box is weather resistant PP (poly-propylene). The material is safe to be buried in soil or exposed to sun.

Kimplas Meter Box/Valve box in its properly Installed position, is designed to take load of human traffic and small vehicular load that usually appear in residential areas.

Kimplas Meter Box/Valve box must be installed

Meter Box / Valve Box Specifications :

Material of construction : Weather resistant PP

Colour : Black

Lid fixing & locking : By rotation and screwing

Cutouts for passing pipe : The Body has inlet and outlet windows to pass the pipe through. Suitable for use with pipes of sizes upto 63 mm.

Load Bearing Capacity : It passes test of load bearing when applied dead load of 100 kg on the meter box top for 1 hour, without any side support. No signs of deformation of the box occur